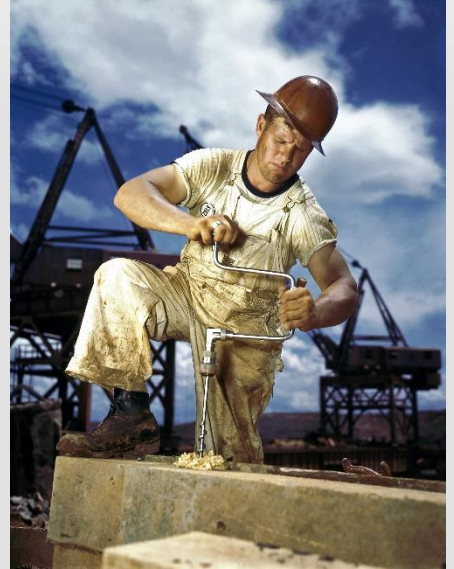


Bio-Plugin™ Biometric SDK Integrated with Australian Windows Based Workforce Management Solution

Challenge

Australia based workforce management solution integrator company GTick was trying to integrate biometrics within their windows based workforce management system for the local Mine Worker Association. The Association was looking for a solution that would enable them to accurately identify mine workers with biometric technology to make their employee profile management system accurate and give them the ability to identify flagged workers. Integrating biometrics with their workforce management solution was the best option for them to address these requirements.



Solution

Due to the fact that GTick had an existing workforce management solution, they were not interested to invest in developing a new system which supports the biometric identification of local mine workers. They were looking for software which can be integrated with their existing software to add biometric identification functionality. M2SYS provided them with Bio-Plugin™. Bio-Plugin™ is a complete biometric software system that can be rapidly integrated to any Windows or web based software in order to add biometric functionality.



Bio-Plugin™ also supports multiple biometric modalities such as fingerprint, finger vein, palm vein, and iris biometrics, which provided the option of offering a choice of modalities to the mine worker association. After much consideration GTick decided to implement palm vein biometrics using our **M2-Palm Vein™ Reader** which was a perfect choice for mine workers who had difficulties using fingerprint recognition.



M2SYS Technology
1050 Crown Pointe Pkwy, Suite 850, Atlanta, GA 30338 USA
Phone: (770) 393-0986, Fax: (678) 559-0219
E-mail: sales@m2sys.com | Website: www.m2sys.com

Bio-Plugin™ Biometric SDK Integrated with Australian Windows Based Workforce Management Solution

Benefit

Choosing Bio-Plugin™ for their integration was the optimal solution for Gtick because it offers all the benefits of a biometric system, including the added advantage of multimodal capability. Palm vein technology identifies individual's with their vein patterns, so Gtick no longer had to worry about the problem of dry, cut or damaged fingers which was a natural condition for mine workers.



After installing 10 palm vein terminals, some benefits included:

- No system dependencies between host and biometrics software.
- Streamlined employee profile management process and improved data accuracy.
- Avoid burdensome internal development and ongoing support requirements.
- Visitors can now be easily identified to maximize the security of their facility.

About M2SYS

M2SYS Technology is U.S. based, biometric research and development firm. Since our inception, we have worked closely with our clients with the goal to enable them to capitalize on the benefits of using biometrics for security and identity management by accelerating their return on investment (ROI).

Since 2011, M2SYS Technology worked with Australia based workforce management solution integrator company GTick. M2SYS helped the company to integrate biometric identification system through Bio-Plugin™ with their workforce management solution. Currently there are more than 200 mine workers in Australia identified at their workstations with palm vein biometric from 10 terminals.



M2SYS Technology
1050 Crown Pointe Pkwy, Suite 850, Atlanta, GA 30338 USA
Phone: (770) 393-0986, Fax: (678) 559-0219
E-mail: sales@m2sys.com | Website: www.m2sys.com